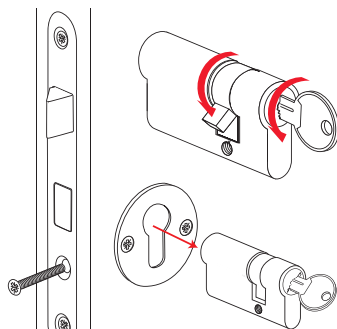
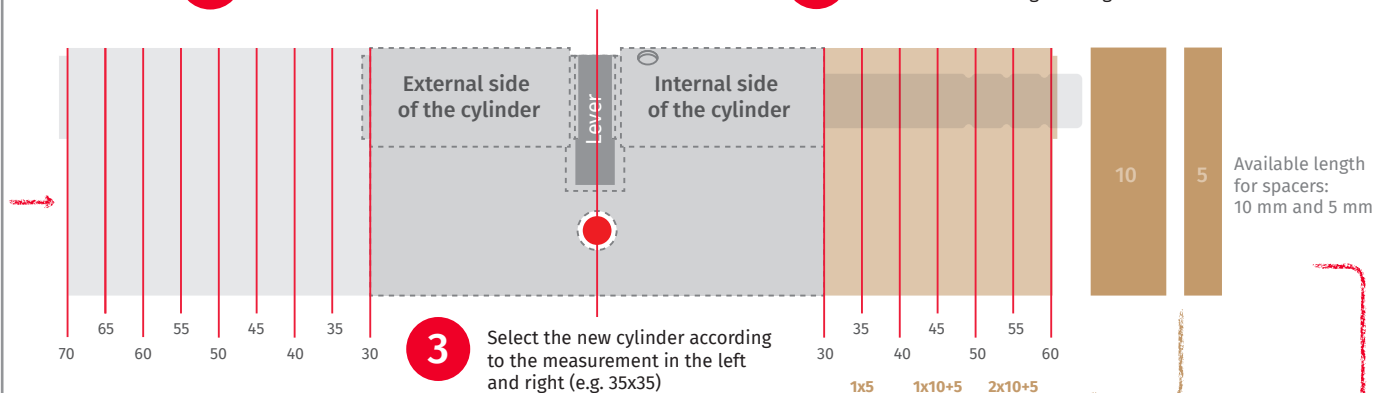


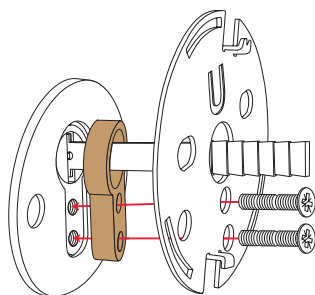
- 1** Unscrew the lock screw from the lock box and remove the old cylinder by gently twisting the key until the lever is centered



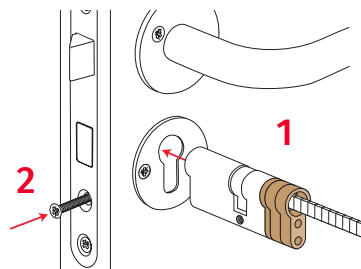
- 2** Place the old cylinder on the picture, aligning the lever



- 7** Secure the backplate with the two screws

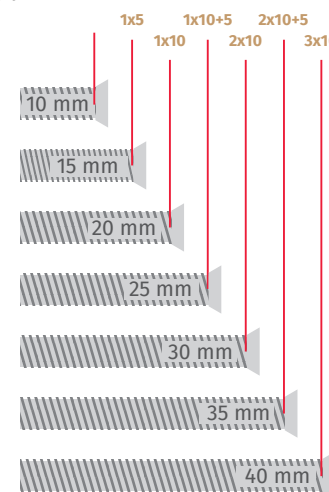


- 6** Mount the spacers on the cylinder. Insert the new cylinder and secure it with the lock screw

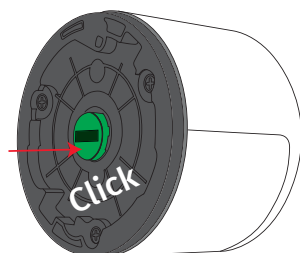


- 5** Select the screws into the appropriate length depending on the number of spacers added.

Check the length of the screws by placing it on the picture



- 8** Insert the green adaptor in the Smart lock body



- 9** Mount the Smart Lock on the backplate

